

KANGAROO SERIES

**True Source
of Energy**

MSE 415-445 Watt



Fully Automated & Largest Manufacturing Facility in Australia



Our Approach

We believe high quality solar power should be produced locally at globally competitive pricing.

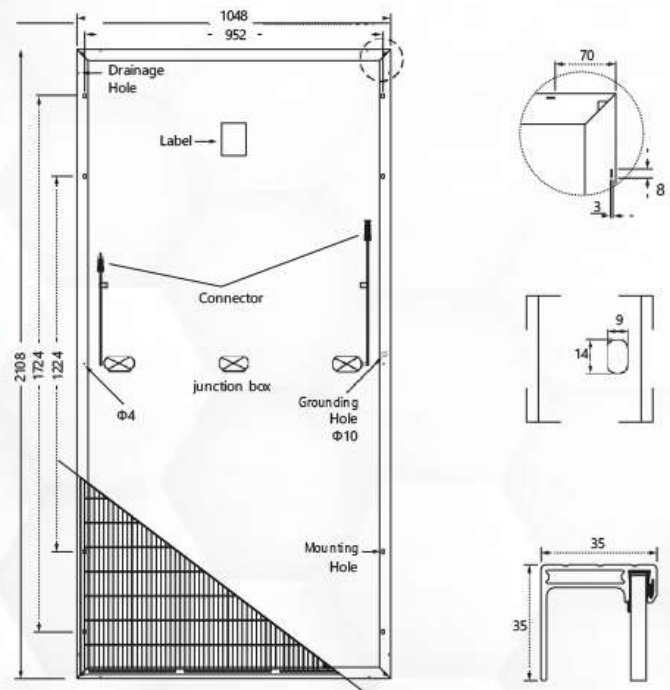


Our Quality

- › 2400 pa wind & 5400 pa mechanical loads
- › High temperature operation
- › Easy module replacement
- › Quality control and traceability by stringent
- › QMS system
- › State of ART fully automatic facility
- › Earth leakage tested to 3600V DC
- › Double Electro-Luminescence (EL) tested
- › Built to perform in low light condition
- › Module Pass fire class C performance per UL790

Module Design

Cells Type	Mono 166x83mm
Weight	25kg
Dimension	2108x1048x35mm
Output Cables	4.0mm ² ; Portrait: N 400mm/P 300mm, Landscape: N 1400mm/P 1400mm
No. of Cells	144 (6x24)
Glass	3.2 mm High Transmission, Antireflection Coating
Junction box	IP68, 3 Bypass Diodes
Connector	QC Solar (Suzhou) Corporation(QC4.10-cd) OR Sta ubli Electrical Connector AG(PV-KST4-EVO 2/xy _UR; PV-KBT4-EVO2/xy_UR)
Packing	31pcs/pallet, 310pcs/20GP, 726pcs/40HQ



AUSTRALIAN
QUALITY THAT
YOU CAN TRUST



Modules	MSE-415W-m72H		MSE-420W-m72H		MSE-425W-m72H		MSE-430W-m72H		MSE-435W-m72H		MSE-440W-m72H		MSE-445W-m72H	
	STC	NOCT	STC	NOCT	STC	NOCT	STC	NOCT	STC	NOCT	STC	NOCT	STC	NOCT
Maximum Power(Pmax)	415W	309W	420W	318W	425W	325W	430W	331W	435W	338W	440W	342W	445W	346W
Open-Circuit Voltage(Voc)	49.6V	47.7V	49.8V	47.9V	50.0V	48.2v	50.2V	48.7V	50.35V	49.2V	50.5V	49.4V	50.58V	49.8V
Maximum Power Voltage(Vmp)	41.15V	40.1V	41.2V	40.3V	41.26V	40.5V	41.51V	40.8V	41.66V	41.0V	41.81V	41.2V	41.96V	41.45V
Short-circuit Current(ISC)	11.23A	8.27A	11.27A	8.31A	11.29A	8.35A	11.30A	8.38A	11.31A	8.40A	11.34A	8.42A	11.37A	8.69A
Maximum Power Current(Imp)	10.08A	7.71A	10.19A	7.77A	10.3A	7.82A	10.36A	7.9A	10.44A	8.2A	10.52A	8.41A	10.61A	8.7A
Module Efficiency(%)	19.70%		20.01%		20.20%		20.36%		20.46%		20.76%			
Operating Temperature(°C)					-40 ~ +85°C									
Maximum System Voltage					1500V DC									
Maximum Series Fuse Rating					20A									
Power Sorting					0~+5W									
Power Rating					±5%/±2%/±2									
Pmax/Isc/Voc%														

Noct : Irradiance 800w/ M², Cell Te Mpe Rature 20°C, Spectrum Am1.5, Wind Spe Ed 1m/s

Stc : Irradiance 1000w/M², Cell Te Mpe Rature 25°C, Spectrum Am1.5



Temperature Ratings

Nominal Operating CellTemp	45°C ±2°C
Tempcoefficient of Pmax	-0.37%/°C
Tempcoefficient of Voc	-0.29%/°C
Tempcoefficient of Isc	0.05%/°C



Maximum Ratings

Operational Temp	-40 to +85°C
Max system Voltage	1500V DC (IEC)
Max Series Fuse Rating	20A
Mechanical Load	5400pa



Performance Warranty

Max power degradation	0.5%/year
	97.5% at the end of first year
	95.0% at the end of 10th year
	85.5% at the end of 25th year



Made in Australia
21.18%
 Max Module Eff.

Contact Us



Msquare Energy Pty Ltd



1800 336 786 / +61 286073354



96-100 Toongabbie Rd
Girraween NSW Australia 2145



www.msquareenergy.com.au



support@msquareenergy.com.au

/msquareenergy01